



# LICENSE FEE UPDATE

January 2017

# POST REFERENDUM BOARD RESOURCE DECISIONS RESHAPING OUR UNIFIED BAR\*

## FY2013

- Reduced management and staff through realignment of functions
- Reduced board, staff and volunteer expenses
- Transitioned to Uniform Bar Exam; discontinued Spokane bar exam site
- Transferred administration of Washington Leadership Institute to University of Washington School of Law
- Transitioned Young Lawyers Division to Young Lawyers Committee
- Transitioned Home Foreclosure Legal Aid Project to Northwest Justice Project
- Introduced financial accommodations (Hardship Option and Payment Plan)
- Introduced employment tools (Job Target, Job Seekers group and Webcast programs)
- Retired *Resources Directory*, reduced *NWLawyer* to 9 issues, and introduced *NWSidebar* (WSBA Blog)

## FY2014

- No license fee increase; planned use of reserves
- Addressed compensation issues (more than three-quarters of WSBA mid-tenure and long term employees were under market)
- Filled disaster preparedness gaps (set up disaster recovery site in Eastern WA; revamped and tested disaster recovery plan)
- Launched Call to Duty program, serving veterans in Washington state
- Built LLLT program
- Introduced electronic document management system
- Realigned CLE programming to focus on sections, ethics, and 21<sup>st</sup> century skills; introduced free CLE series (Legal Lunchbox)

## FY2015

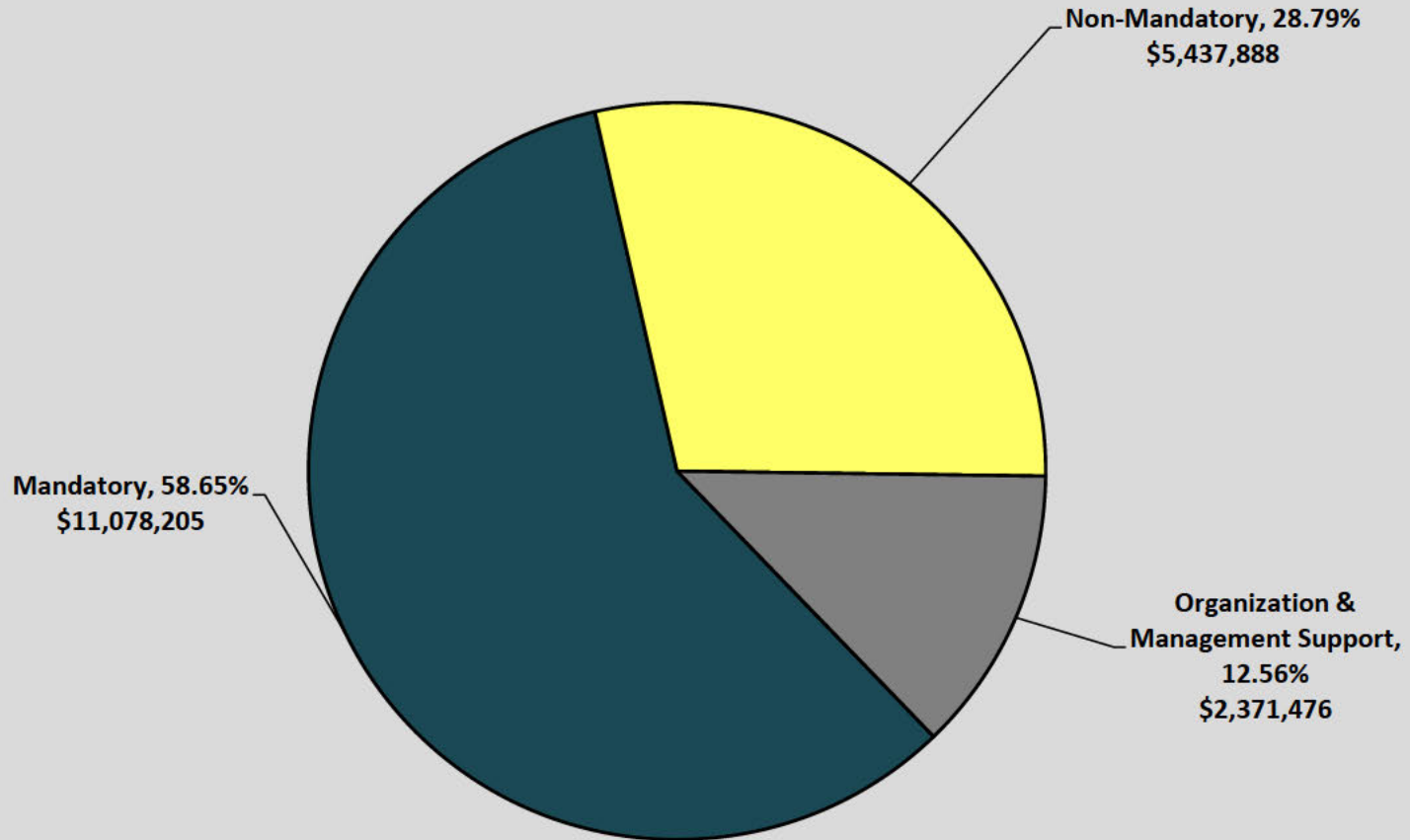
- No license fee increase; planned use of reserves
- Realigned and increased staffing to support regulatory programs (Random Audit, MCLE, Law Clerk and Limited Practice Officers), non-regulatory programs (Ethics Line/Professional Responsibility Counsel, New Lawyer Education, Public Service, Access to Justice Board, Council on Public Defense, Washington State Bar Foundation), Technology, and Communications
- Reduced staffing in LAP and LOMAP programs while expanding outreach through new delivery systems, seminars, resources and free webcasts
- Introduced mentoring programming and resources (MentorLink)
- Reduced facilities footprint by 7,700 SF, renewed WSBA lease, and renovated space on very favorable terms (saving \$3 million over life of lease)

## FY2016

- License fee increase from \$325 to \$385 (for 2016 and 2017); planned use of reserves
- Realigned staffing to increase support to diversity, mentorship and public service programs; brought *NWLawyer* position in-house; while reducing FTE overall
- Increased funding for Moderate Means Program
- Stopped absorbing credit card fees (~\$300,000 savings)
- Upgraded MCLE system

\* *Mandatory increases in the employer contribution under the state retirement program (from 7.21% in July 2012 to 11.18% in July 2015) also impacted WSBA resources.*

# FY17 MANDATORY COMPARED TO NON-MANDATORY PROGRAMS

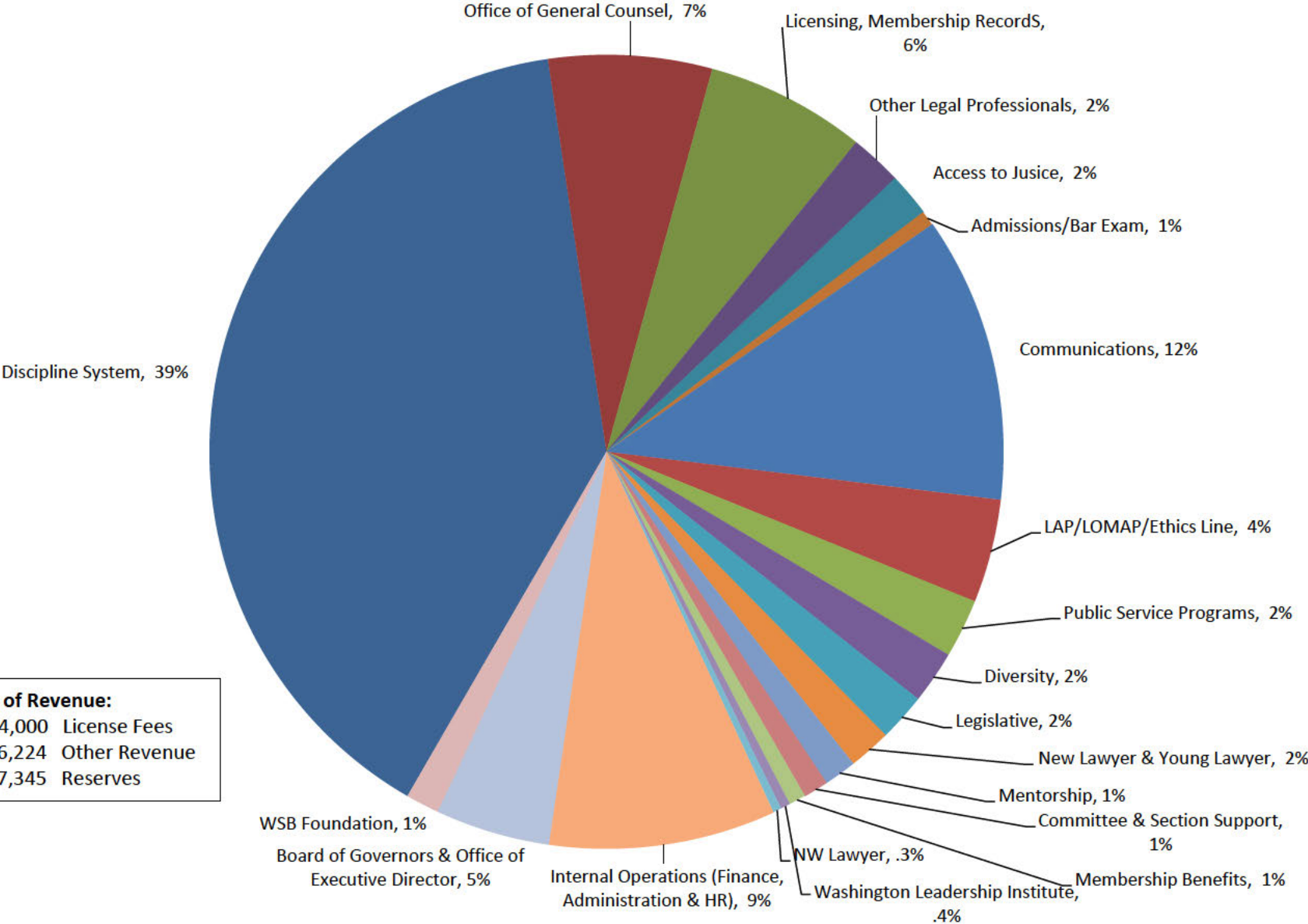


**Total General Fund Expenses**  
**\$18,887,569**

## FY17 MANDATORY COMPARED TO NON-MANDATORY PROGRAMS

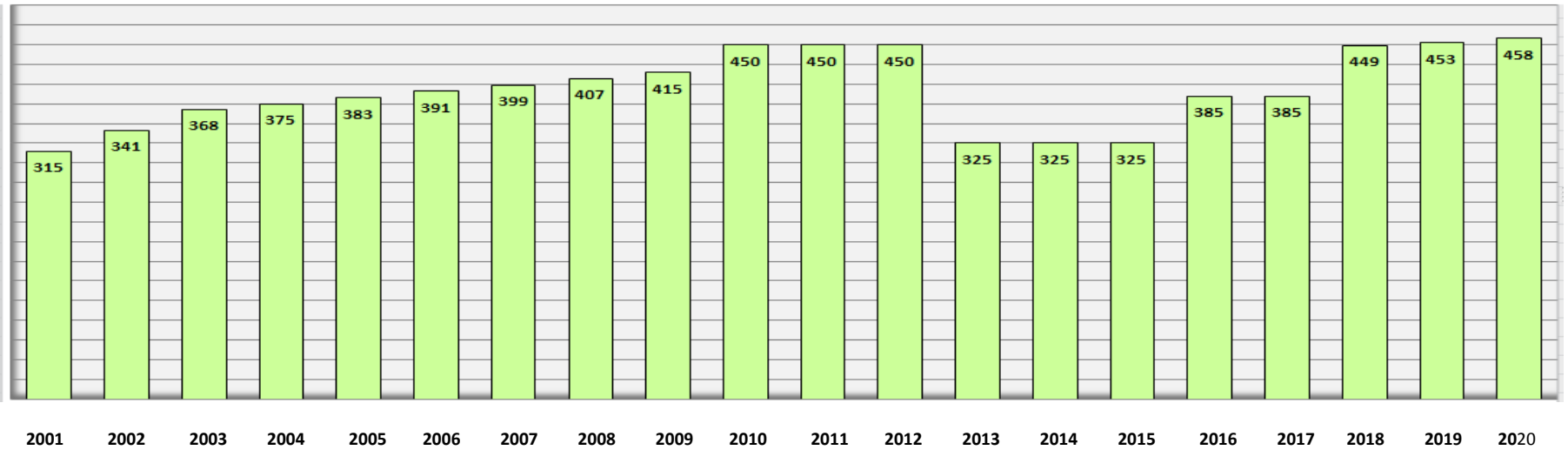
<b>MANDATORY</b> <b>[58.65%, \$11,078,205]</b>	<b>NON-MANDATORY</b> <b>[28.79%, \$5,437,888]</b>	<b>ORANIZATION/MGMT</b> <b>[12.56%, \$2,371,476]</b>
<ul style="list-style-type: none"> <li>• Access to Justice Board</li> <li>• Discipline &amp; Disability Systems</li> <li>• Disciplinary Board</li> <li>• Admissions</li> <li>• Licensing &amp; Membership Records</li> <li>• Mandatory CLE</li> <li>• Law Clerk Program</li> <li>• Office of General Counsel</li> <li>• Practice of Law Board</li> <li>• Limited License Legal Technicians</li> <li>• Limited Practice Officers</li>   <li>• Allocated IT and Admin time</li> </ul>	<ul style="list-style-type: none"> <li>• New Lawyer Programs</li> <li>• Sections Administration</li> <li>• Lawyers Assistance Program</li> <li>• Law Office Management Assistance Program</li> <li>• Professional Responsibility Program</li> <li>• Mentorship</li> <li>• Member Benefits</li> <li>• Public Service Programs</li> <li>• Diversity</li> <li>• Washington Leadership Institute</li> <li>• Communications</li> <li>• NW Lawyer</li> <li>• Legislative Affairs</li>   <li>• Allocated IT, Admin, and ED time</li> </ul>	<ul style="list-style-type: none"> <li>• Board of Governors</li> <li>• WSB Foundation</li> <li>• Administration</li> <li>• Human Resources</li> </ul>

# FY 17 BUDGET ALLOCATIONS

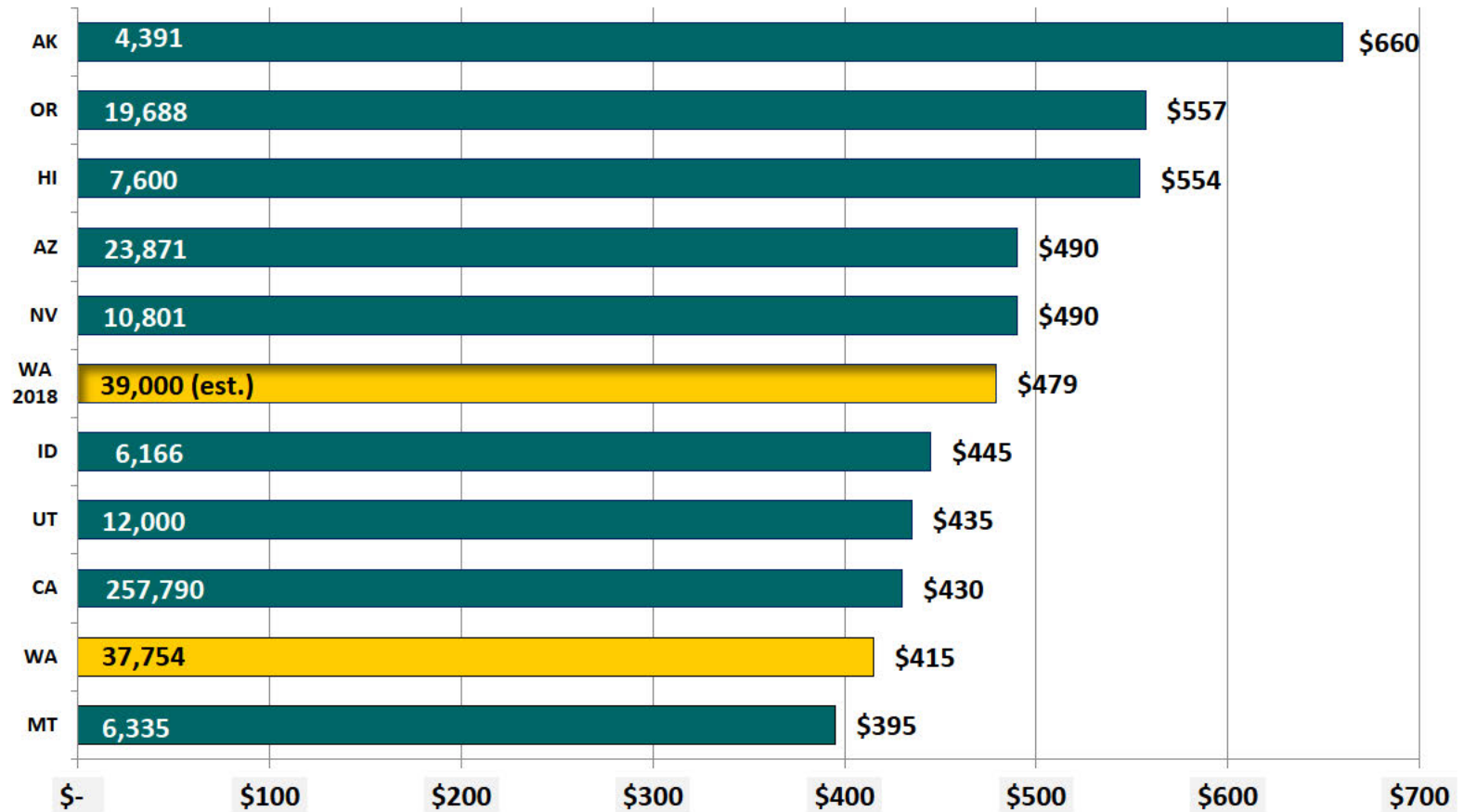


**Source of Revenue:**  
 \$13,204,000 License Fees  
 \$ 3,686,224 Other Revenue  
 \$ 1,997,345 Reserves

## WSBA LAWYER LICENSE FEES: 2001-2020



## COMPARATIVE TOTAL COST TO PRACTICE IN 2016: WESTERN STATES UNIFIED BAR ASSOCIATIONS\*



\*Source: ABA Division for Bar Services, 2015 State and Local Bar Membership, Administration & Finance Survey;